

1. Hardware Installation

To install the TV&FM Video Capture Card series into your computer, please follow the steps as below:

Turn off all your computer power sources and remove the cover of your PC

Plug the TV&FM Video Capture Card into any free PCI slot. And connect the TV Antenna/Cable/FM Antenna/audio-out/remote Sensor etc. device to the TV card

2. Driver Installation:

Before installation, it is highly recommended that all background Programs be disabled .These include such applications as anti-virus software and system monitoring applications.

Turn on your PC and start up your windows. Shortly after entering the Windows, you will see the “Found NEW Hardware Wizard dialog box”



Click the option for “Install from a list or specific location”.
Then click “NEXT”

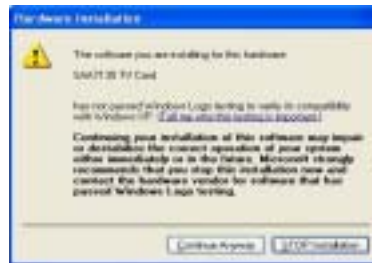


The wizard will prompt you to choose your search and installation options.



Insert the Driver CD into CD-ROM(assumed to be E:\).Tick
“include this Location in the search” then click on “Browse” to

find the driver in CD-ROM As below: E:\driver .Click NEXT to Continue.

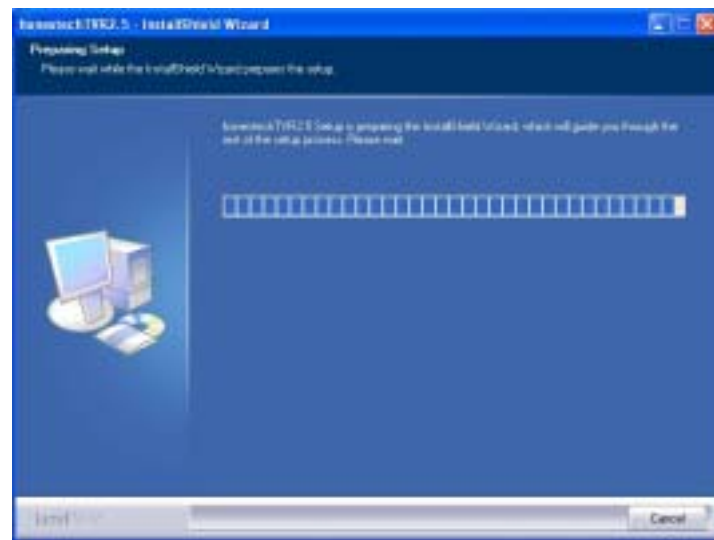


Click “Continue Anyway” .Windows New Hardware Wizard will guide you to the process step by step until the installation is finished.

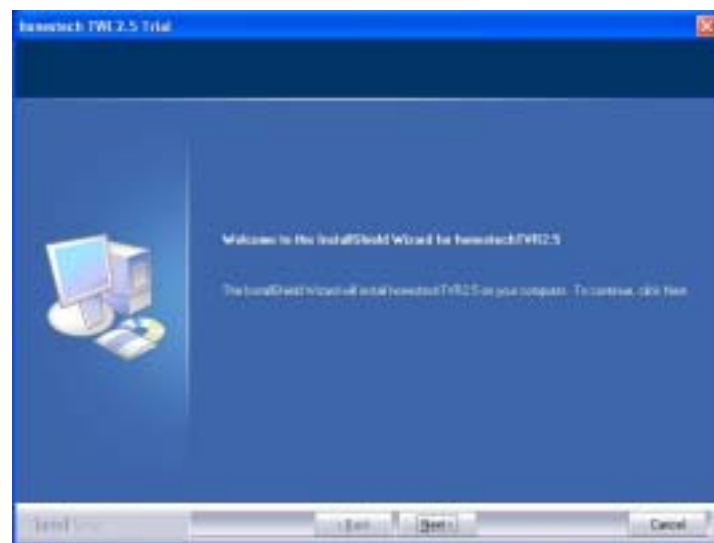


3. Application Software Installation:

Insert the Driver CD into CD-ROM .Double click My Computer→CD-ROM→APP→Setup.exe



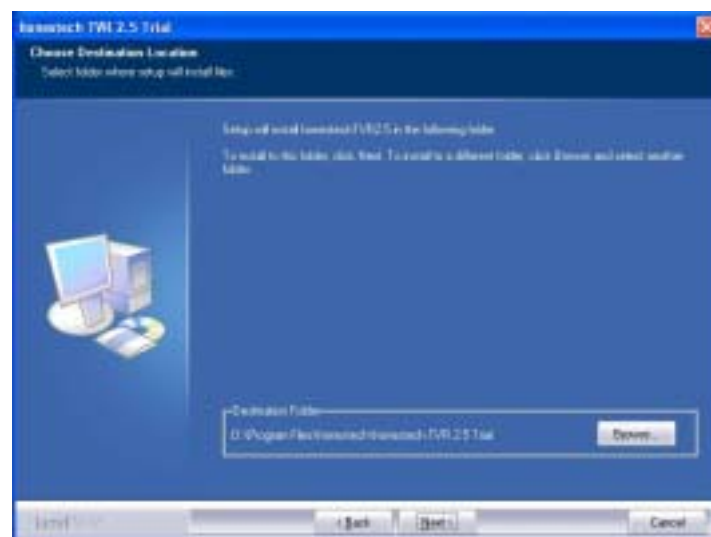
Click NEXT



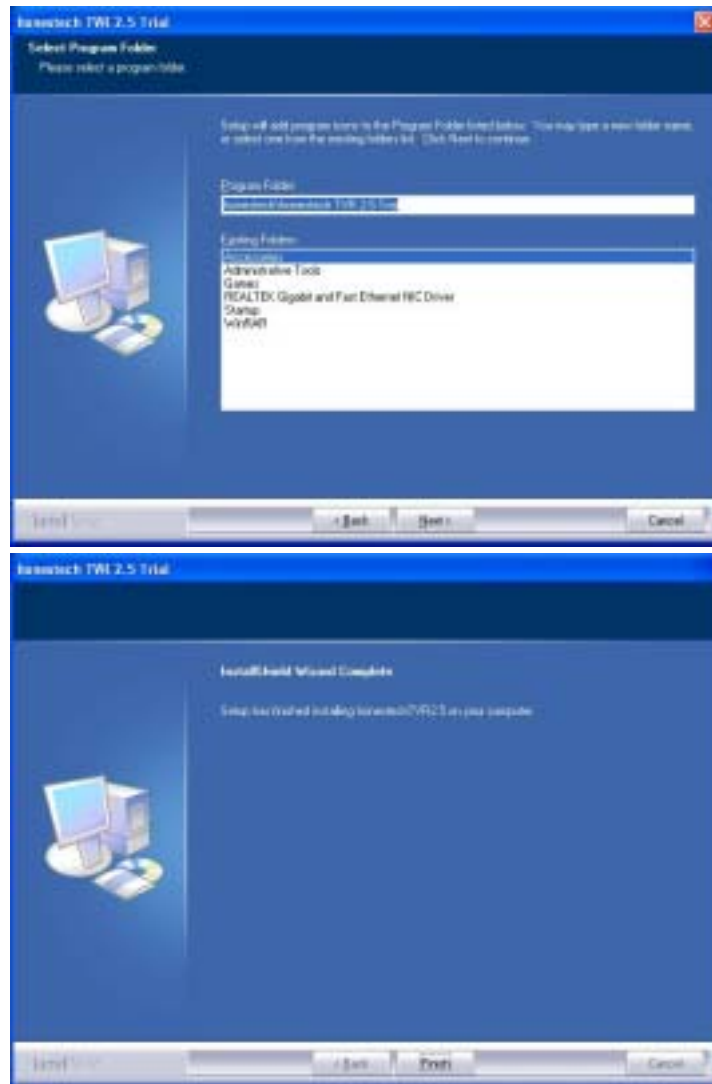
Select “I accept the terms of the license agreement” and click
NEXT



Click NEXT



Click NEXT



Press finish, software installing finished.

**** For the detailed instruction, please refer to the software help file.***